

A NEW SPECIES OF FRUITFLY OF THE GENUS *Anastrepha*
SCHINER, 1868 (DIP., TEPHRITIDAE) FROM BRAZIL

R.A. ZUCCHI¹

RESUMO

Uma nova espécie de mosca-das-frutas do gênero *Anastrepha* Schiner, 1868 (Dip., Tephritidae) do Brasil

Neste trabalho descreve-se *Anastrepha sinvali*, n. sp. coletada em frascos caça-moscas (tipo valenciano) com suco de uva comercial e água (1 : 4 a 1 : 5), distribuídos em pomares de maçãs e pêsegos em Caçador, Santa Catarina. A fim de facilitar a diagnose, esta nova espécie foi inserida na chave ilustrada de Steyskal.

Anastrepha sinvali, n. sp.

Face concave, without median ridge. Mesonotum 2.5 to 3.5mm long. Humerus and lateral stripe yellow pale; median stripe less evident than lateral stripe. Metanotum not darkened laterally. Macrochaetae yellow brown; pile yellowish. Katepisternal bristle weak. Wing 7.0 to 8.0mm long; the bands mostly yellowish pale and C band without brown border; all the bands separated and V band sometimes broken above; a small dark spot in the fork of Rs and another below R₄₊₅ just after the fork of Rs (Fig. 1), in one paratype male this second spot is faint; basal median cell hialine and cubital cell yellowish.

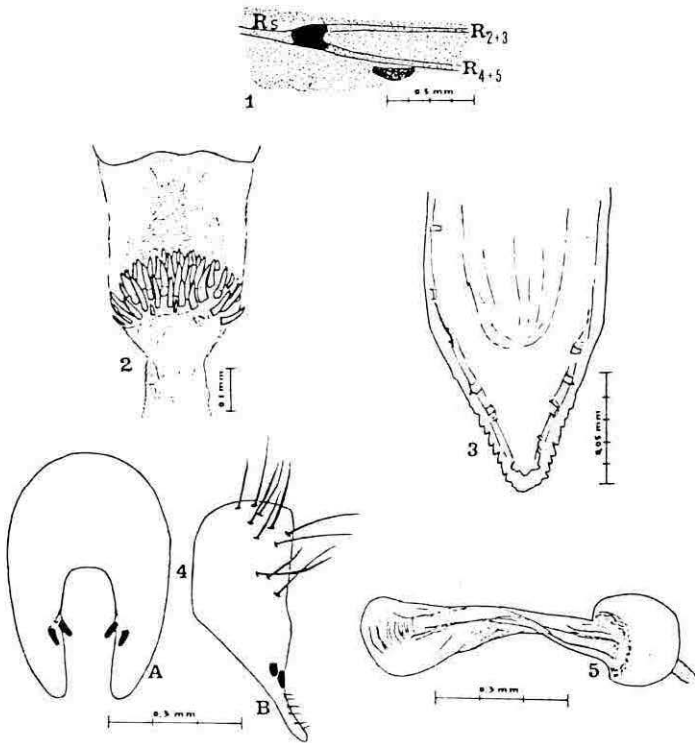
Female postabdomen: Ovipositor sheath 2.25 to 2.46mm long with the apical third narrower than the base; spiracles .61 to .74 mm from base. Rasper well developed, with slender hooks in about 8 rows (Fig. 2). Ovipositor 1.70 to 1.96mm long, .07 to .09mm wide, slightly expanded at base; tip .07 to .08mm long, slightly expanded just basad of the end of oviduct and tapering to an acute apex with minute serrations (Fig. 3).

Male postabdomen: Epandrium with surstyli blunt and prensisetae straight and subcilindric (Fig. 4); ejaculatory apodeme spatulate (Fig. 5).

Recebido em 17/04/82

¹ Departamento de Entomologia, ESALQ-USP. 13400-Piracicaba, SP.

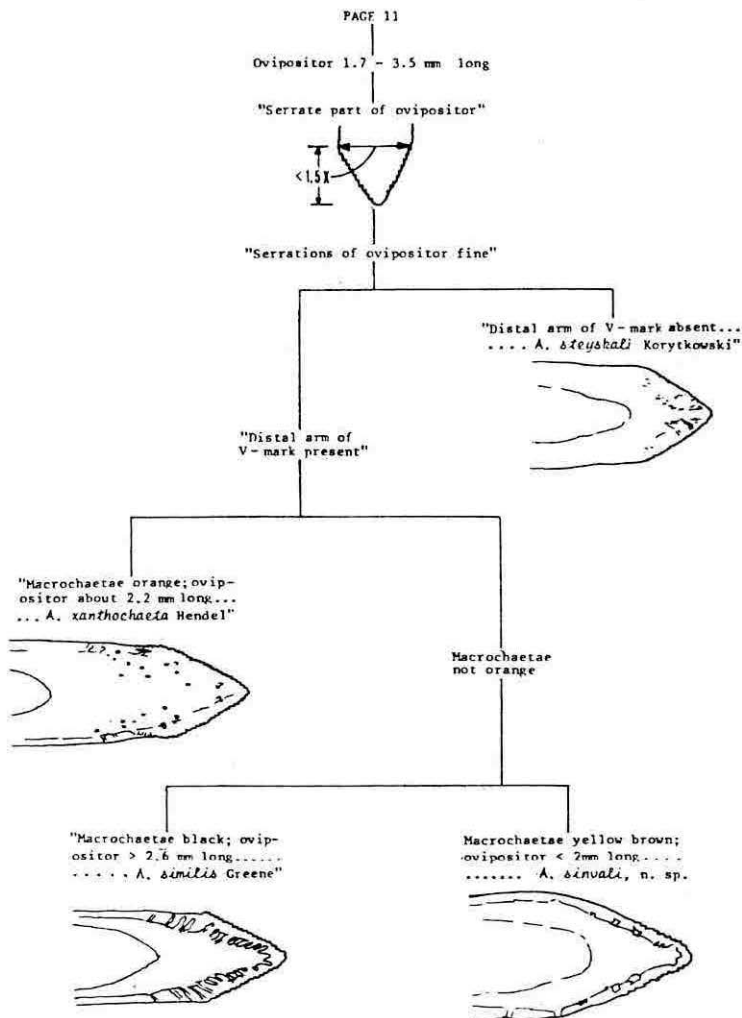
Host: unknown.



Anastrepha sinvali, n. sp. Fig. 1, fork of vein Rs and the two dark spots. Fig. 2, rasper (dorsal view). Fig. 3, ovipositor tip (ventral view). Fig. 4, epandrium, surstyli and prensisetae (A-posterior view, B- lateral view). Fig. 5, ejaculatory apodeme.

Holotype female, Caçador, State of Santa Catarina, Brazil, 27 March 1981, D.N. Gassen leg., deposited in the collection of the "Museu de Zoologia - Universidade de São Paulo"; 8 paratypes (6 ♀ 2 ♂), same locality, 17 February 1981 (3 ♀); 20 February 1981 (2 ♀ 1 ♂); 17 March 1981 (1 ♀); 27 March 1981 (1 ♂); deposited in the collection of the "Museu de Zoologia - USP" (2 ♀ 1 ♂), "Departamento de Entomologia (ESALQ) - Universidade de São Paulo" (2 ♀ 1 ♂) and U.S. National Museum, Washington, D.C., (2 ♀).

Anastrepha sinvali, n. sp. is related to *A. xanthochaeta* Hendel, but it differs from this species and other allied species as follows, based in the Steyskal's pictorial key (1977):



The species is named after Prof. Sinval Silveira Neto ("Departamento de Entomologia, ESALQ, Universidade de São Paulo") for his dedication in teaching and researching insects of agricultural importance in Brazil.

LITERATURE CITED

STEYSKAL, G.C. Pictorial key to Species of the Genus *Anastrepha* (Diptera: Tephritidae). Washington D.C. *The Entomological Society of Washington*, 1977. 35p.

ABSTRACT

This paper deals with the description of *Anastrepha sinvali*, n. sp. collected in traps with commercial grape juice and water (1 : 4 to 1 : 5) as a bait, distributed in apple and peach orchards in Caçador, State of Santa Catarina, Brazil. In order to facilitate the diagnosis, this new species was inserted in the Steyskal's pictorial key.